



# The Role of HIAs in Supporting Choice

## Policy Context and Implications

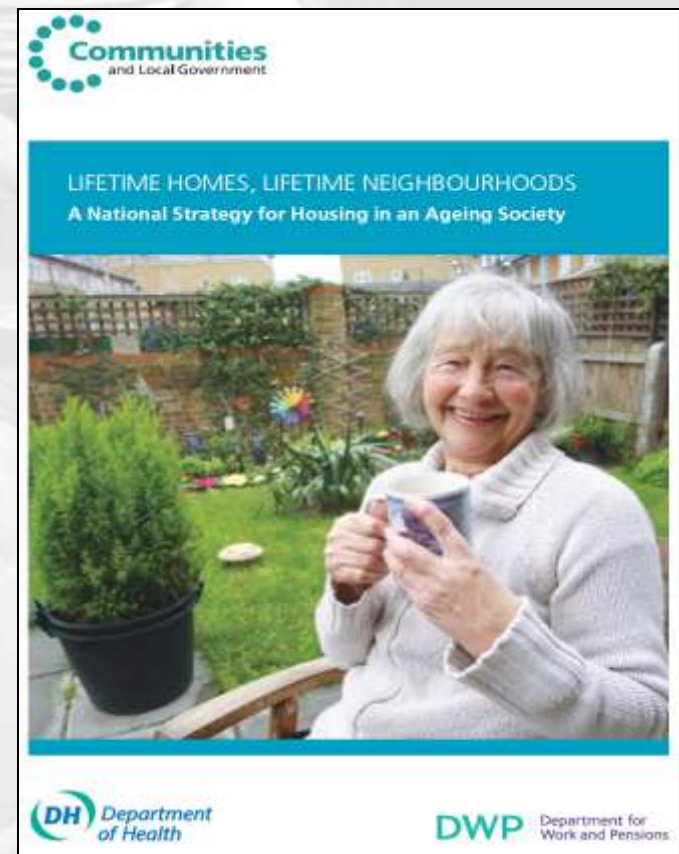
# What will be covered?

- ❑ Policy Context- Lifetime Homes, Lifetime Neighbourhoods
- ❑ A Theoretical Framework
- ❑ Implications for commissioners & Providers.

# Lifetime Homes, Lifetime Neighbourhoods

## A National Strategy for Housing in an Ageing Society

- ❑ More Help to make the Right Choice
- ❑ That Bit of Help-Handyperson Services
- ❑ Modernising DFGs
- ❑ Housing of the Future
- ❑ Reconnecting Housing, Health & Care



# Wider context



## National Policy background reflects

- Demography
  - More services
  - Greater choice and quality
- Need to Think Globally but Act locally
- Personalised Solutions/ Pooled resources
- Invest to Save
- Choice & independence
- Design Services across Health, Housing & Social Services

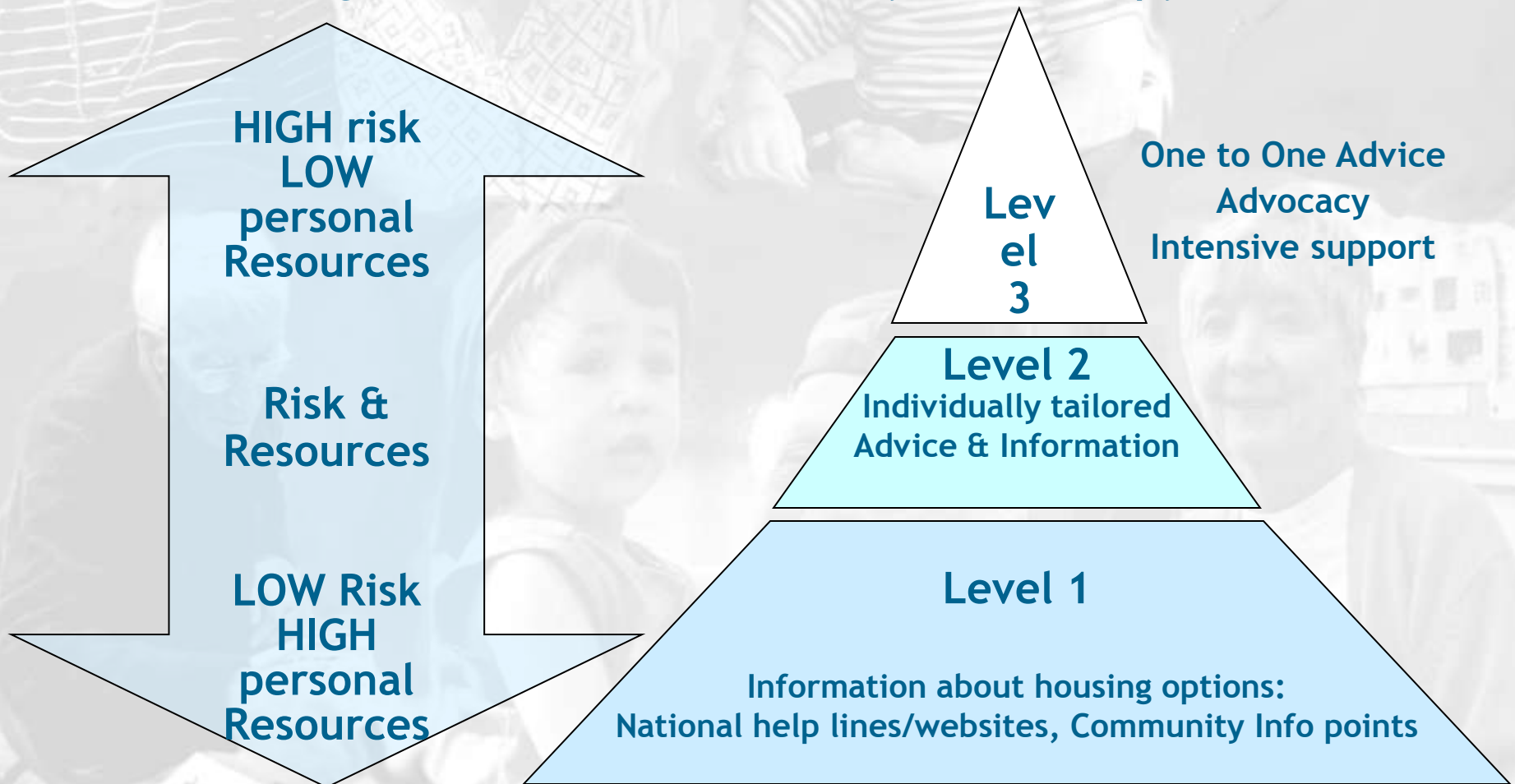
# Why is Choice so Important?



- ❑ 75+ growing fastest
- ❑ Growing diversity
  - Health -mental & physical
  - Wealth
  - Expectations
  - Cultural diversity
- ❑ Older People say they want Choice, access, info & advice
- ❑ Implications
  - Requires Planning at all levels
  - Menu of Choices
  - Timely Choices
  - Housing central to Health & Well-being

# A Framework for the day

Housing information & advisory services pyramid.



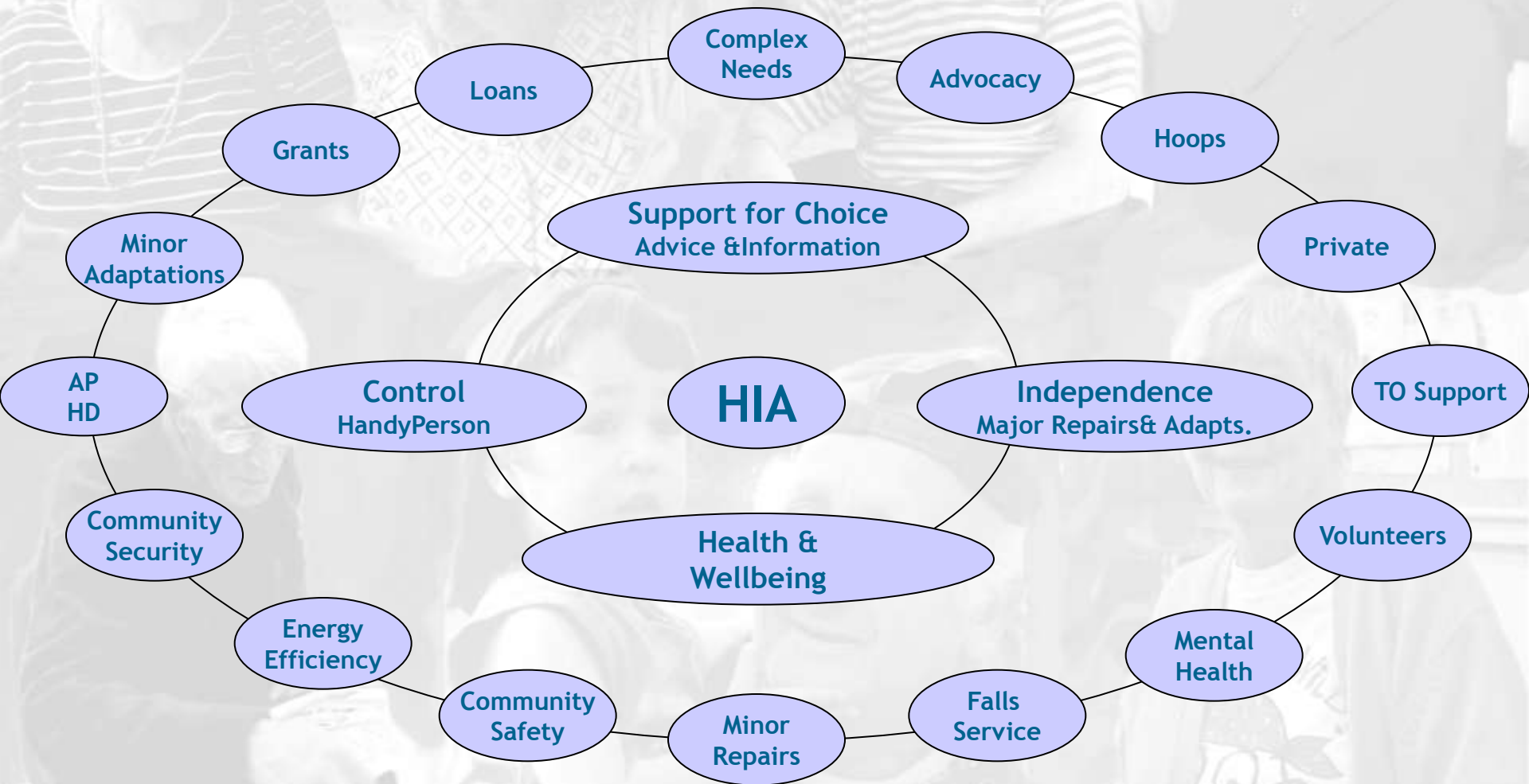
# Future HIA

## Vision

- Universal Service
- Holistic
- Personalised
- Preventative
- Outcome based
- Expert on Housing related support



# The Hub around which people exercise Choice



# Implications

- ❑ Mapping the environment
  - What services are available?
  - What is missing & for whom?
  - In case of duplication who is best placed?
- ❑ Provide real options/choice
  - One size does not fit all
  - Consider the implications of Choice -time, resources, quality, skills required
  - Informed choice
  - Provision of choice & Control is an outcome of itself
- ❑ Encourage Timely Access
  - Marketing
  - Information/partnership protocols
  - Clear Criteria
  - Early holistic assessment
  - Provide low-level solutions
- ❑ ‘Whole systems’ approach
  - Jointly commission
  - Shared outcomes/reporting
  - Housing as equally important in life-chances

# Challenges



- Lack of Clarity for Clients
- Specifying & Pricing S4C outcomes
- Greater choice will require greater skills set
- Local priorities will lead to greater variability
- Some HIA services will suffer
- Capacity of current HIA services to respond