

Foundations Network Meeting London/SE - 2nd March 2022

Inclusive design

Sheila Mackintosh

Housing Consultant

Visiting Fellow, Centre for Public Health and Wellbeing, University
of the West of England, Bristol

The meaning of home

- **It reflects who we are as individuals**
- **Each home adaptation can be a reminder of things lost - or gained**
- **Each adaptation is also an advert to others**

The importance of good design

Encourage more people to come forward earlier by removing any stigma

Ensure more adaptations are approved and fewer removed at change of tenancy

Longer term, strategic approach - make the housing stock inclusive for everyone

Create a more circular economy – less waste, more recycling

“Design is an investment, not a cost”

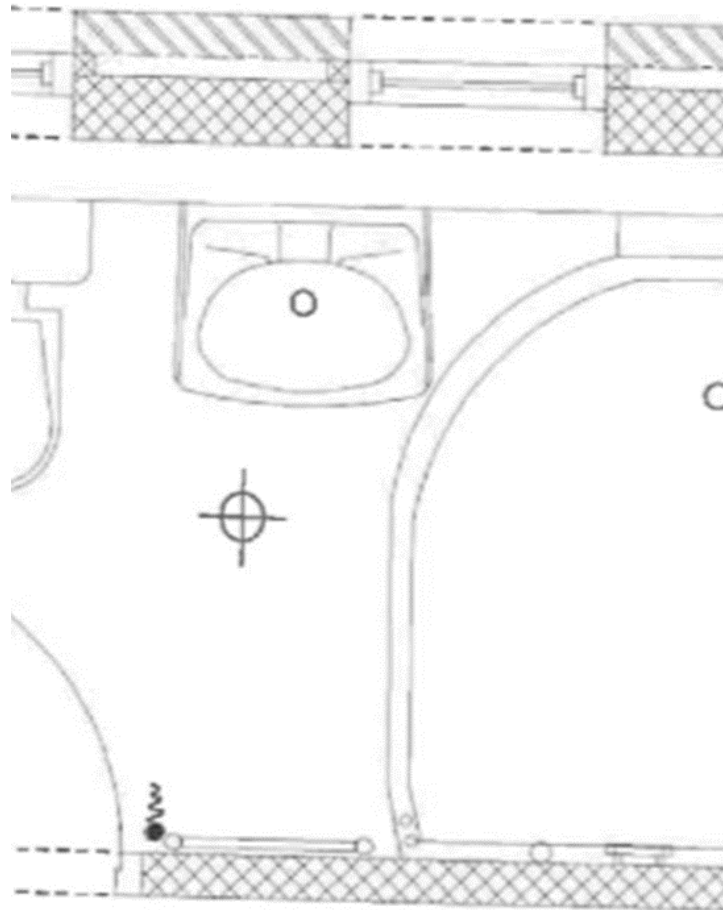
“Design is too often seen as a final touch, added at the end of the process”.

Centre for Ageing Better and UKRI (2021)
Using design to innovate more effectively in the healthy ageing sector.

<https://cop.ageing-better.org.uk/sites/default/files/2021-10/using-design-innovate-effectively-healthy-ageing.pdf>

“Design is often delegated by time-poor leaders to inexperienced team members”

“Design requires an investment of leadership time”



- Small spaces
- Awkward layouts
- Difficult drainage
- Narrow doorways









Issues

Curtains / screens

Half-height screens / moveable screens / no screen

Chrome rails / ribbed rails / dual purpose/ positioning of rails

Rimless toilets / standard toilet / toilet height / wash/dry toilets

Wall boards / tiles - areas to board/tile (just shower or more?)

Shower tray underneath bath – too narrow?

Thermostatic / electric showers

Shower pods

Dementia, sight loss - lighting, colour contrast, pattern

How to prevent water leakage

How to keep the space clean and tidy

Maintenance and repair

Heating

Storage

Online Design Guide

<https://www.foundations.uk.com/design/>

Work in progress